

ETF CenterSM

Powerful Tools and Market Data for Analyzing U.S. Exchange-Traded Funds

Interactive Data offers a robust ETF CenterSM designed to provide you and your clients with a comprehensive suite of real-time and end-of-day (EOD) market data and analytical tools. We cover over 800 exchange-traded funds (ETFs) listed for trading in the U.S.

The ETF Center is developed and hosted by Interactive Data and can be customized and integrated into your existing online offerings or used as a stand-alone destination site with your branding.

Our ETF Center provides financial professionals with tools designed for easier and more efficient searching and monitoring of U.S. listed ETFs.

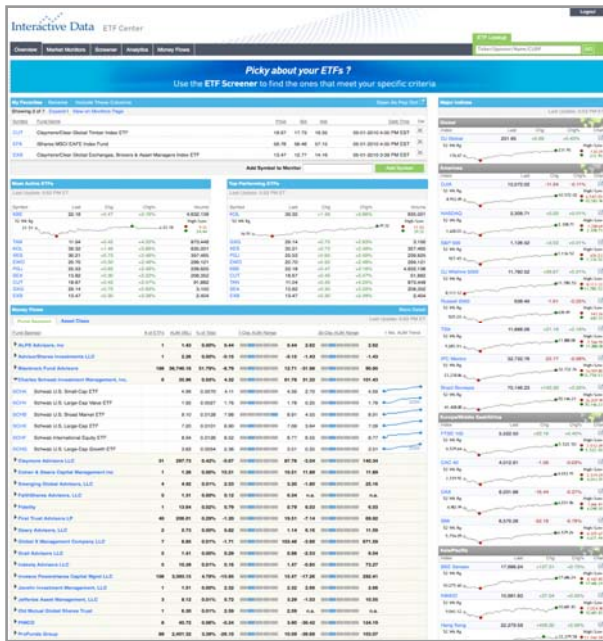
The screenshot displays the Interactive Data ETF Center interface. At the top, there's a navigation bar with 'ETF Center' and a search bar. Below that, a banner reads 'Pick your ETFs? Use the ETF Screener to find the ones that meet your specific criteria.' The main content area shows a table of ETFs with columns for Name, Ticker, Category, Assets, and Inception Date. The table lists various funds such as iShares Core Bond Fund, iShares Core Equity Fund, and iShares Core International Fund. The bottom of the page features the Interactive Data logo and a copyright notice for 2010.

Customizable Modules

- **Market Monitor** – Create personal ETF watch lists that are designed to track latest trade, volume, bid/ask spreads, indicative net asset value (iNAV), premium/discount, and other trading and performance data. Future enhancements are anticipated to include an alert feature to help users stay on top of market activity.
- **Constituent Report** – Drill down to the constituent level of an ETF and see last trade, spread, performance attribution, sector weights and performance contribution data, as available. (Access to the reports is subject to additional third party fees and/or licenses.)
- **ETF Profile** – View a comprehensive screen of fund facts including trading and performance data for the ETF, sector and country weights and robust charting.
- **Interactive Screener** – Easily search, filter and monitor ETFs by criteria including performance, fund sponsor, and fees. You can also set up your personal watchlist right from the Screener.
- **Money Flow** – This feature is designed to allow you to analyze and create reports for AUM changes by ETF, Fund Sponsor, Country, Sector and other segments.
- **FVIS INAV** – Provides a fair value adjusted end-of-day iNAV for ETFs that include international equity securities using Interactive Data's Fair Value Information Service (FVIS), which clients may want to compare to traded prices, iNAV and NAV data.

Featured Content

- Global data feed
- Equities, fixed income, MBS, commodities, currencies
- Sector groupings
- Trade/spread statistics
- Access to ETF database universe
- Constituent level data (subject to additional third party fees and/or licenses)



Key Capabilities

- Search for ETFs based on structure, fees, performance and transaction costs
- Compare ETFs based on sector, country, currency or constituent performance
- Monitor a Sponsor, or cross-Sponsor, set of ETFs based on real-time trade performance and spread data
- Compare ETF traded price to bid/ask premium

About Interactive Data

Interactive Data Corporation is a leading global provider of financial market data, analytics and related solutions to financial institutions, active traders and individual investors. The company's businesses supply real-time market data, time-sensitive pricing, evaluations and reference data for millions of securities traded around the world, including hard-to-value instruments. Interactive Data, headquartered in Bedford, Mass., has approximately 2,400 employees in offices located throughout North America, Europe, Asia and Australia.

Interactive Data's Managed Solutions business is a leading provider and operator of customized financial information systems. The group builds and manages Web-based financial market data portals and terminals for a range of organizations worldwide, from retail and investment banks to asset managers, online brokers, stock exchanges and media portals. By aggregating a broad set of financial data and client-proprietary content and offering visually stunning features such as charts, sophisticated search functions, decision-support tools and analytics, these intuitive applications can help customers optimize their business processes and realize efficiencies. This group is managed as part of the Interactive Data's Real-Time Services business, which provides a comprehensive suite of offerings that includes PlusFeedSM, a consolidated, low-latency digital datafeed.

Amsterdam ■ Bedford ■ Boston ■ Chicago ■ Cologne ■ Dublin ■ Fort Lauderdale ■ Frankfurt ■ Geneva ■ Glasgow ■ Helsinki ■ Hong Kong ■ Houston ■ Jersey, CI
London ■ Los Angeles ■ Luxembourg ■ Madrid ■ Melbourne ■ Milan ■ New York ■ Paris ■ Rome ■ San Francisco ■ Santa Monica ■ Singapore ■ Sydney ■ Tokyo ■ Zurich

New York

100 William Street
17th Floor
New York, NY 10038
Tel: +1 212 269 6300
Fax: +1 212 771 6987
Email: sales.us@interactivedata.com

Boston

10 Post Office Square
8 North
Boston, MA 02109
Tel: +1 671 426 0400
Fax: +1 617 423 2230
Email: sales.us@interactivedata.com

Chicago

2 North LaSalle
Suite 1807
Chicago, IL 60602
Tel: +1 312 641 1528
Fax: +1 312 641 6399
Email: sales.us@interactivedata.com

San Francisco

3955 Point Eden Way
Hayward, CA 94545
Tel: +1 510 266 6000
Fax: +1 510 266 6100
Email: sales.us@interactivedata.com

Limitations

This document is provided for informational purposes only. The information contained in this document is subject to change without notice and does not constitute any form of warranty, representation, or undertaking. Nothing herein should in any way be deemed to alter the legal rights and obligations contained in agreements between Interactive Data Real-Time Services, Inc. ("Interactive Data"), its affiliates, and its clients relating to any of the products or services described herein. Interactive Data and its affiliates do not provide legal, tax, accounting, or other professional advice. Clients should consult with an attorney, tax, or accounting professional regarding any specific legal, tax, or accounting situation.

Interactive Data and its affiliates make no warranties whatsoever, either express or implied, as to merchantability, fitness for a particular purpose, or any other matter. Without limiting the foregoing, Interactive Data and its affiliates make no representation or warranty that any data or information (including but not limited to evaluations) supplied to or by it are complete or free from errors, omissions, or defects.

Interactive DataSM and the Interactive Data logo are service marks of Interactive Data Corporation, and registered service marks in Australia, European Community, Germany, Japan, Korea, New Zealand, Switzerland, and Taiwan. ETF CenterSM is a service mark of Interactive Data Real Time Services, Inc. Other products, services, or company names mentioned herein are the property of, and may be the service mark or trademark of, their respective owners.